



Albert Road, SE20 | Offers In Excess Of £635,000

02087029777

sydenham@pedderproperty.com

pedder
We live local



In General

- Superb Alexandra Cottage
- Freshly modernised throughout
- Two receptions
- Two double bedrooms
- Kitchen / breakfast room with breakfast bar
- Bathroom with separate shower
- Private rear garden of 33'5 ft
- Courtyard garden off dining room
- No onward chain
- Excellent transport links

In Detail

An elegant and beautifully modernised cottage that blends traditional charm with contemporary elements, all finished in soft neutral tones offering a unique, more modern, open design that maximises space.

The exterior maintains its classic cottage look, with a soft off - white stone façade complimented by the duck egg blue front door and a gravelled front garden with stepping stones leading to the entrance.

The porch is a welcome introduction into the surprisingly spacious accommodation; comprising a lounge to the front, a light filled dining area perfect for hosting and entertaining with French doors opening into a charming courtyard, and a kitchen / breakfast room with plenty of storage and work space.

Upstairs are two double bedrooms, the neutral palette continuing with soft greys and light tones on the walls and built in storage is an added bonus.

Outside, a lawned garden where you can enjoy leisurely evenings outdoors, with a variety of mature plants and trees, it provides a lush, green backdrop that creates a sense of calm and privacy.

Albert Road is one of a few roads within this charming conservation area renowned for their sense of community and location to transport links including Penge West (Overground and Penge East (London/Victoria). Nearby there are a variety of lovely coffee shops, including in Alexandra Nurseries and Crystal Palace Park.

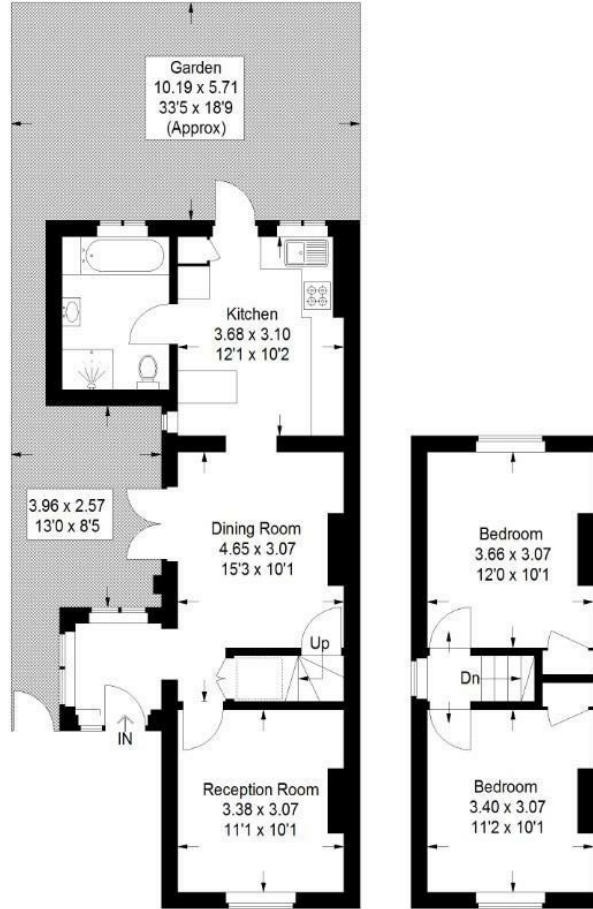
EPC: D | Council Tax Band: D



Floorplan

Albert Road , SE20

Approximate Gross Internal Area
73.2 sq m / 788 sq ft



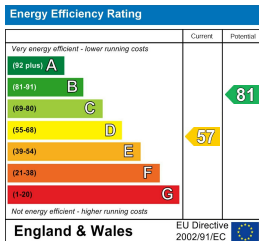
Ground Floor

First Floor

= Reduced headroom below 1.5 m / 5'0"

Copyright www.pedderproperty.com © 2026

These plans are for representation purposes only as defined by RICS - Code of Measuring Practice. Not drawn to Scale. Windows and door openings are approximate. Please check all dimensions, shapes and compass bearings before making any decisions reliant upon them.



Pedder Property Ltd trading as Pedder for themselves and for the vendor/landlord of this property whose agents they are, give notice that (1) these particulars do not constitute any part of an offer or contract, (2) all statements contained within these particulars are made without responsibility on the part of Pedder or the vendor/landlord, (3) whilst made in good faith, none of the statements contained within these particulars are to be relied upon as a statement of representation or fact, (4) any intending purchaser/tenant must satisfy him/herself by inspection or otherwise as to the correctness of each of the statements contained within these particulars, (5) the vendor/landlord does not make or give either Pedder or any person in their employment any authority to make or give representation or warranty whatsoever in relation to this property.